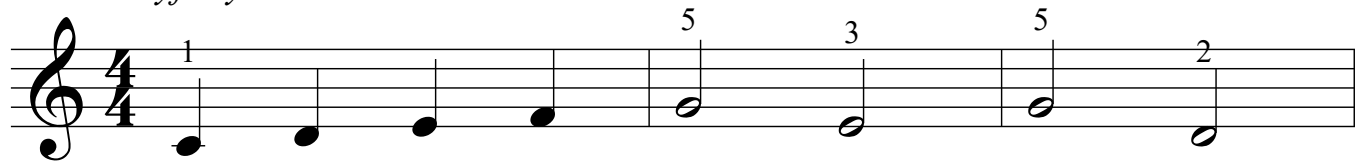


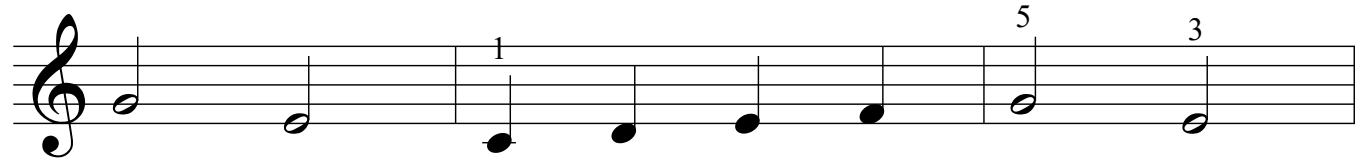
Once There Was a Snowman

Words and music by Moiséle Renstrom
arr. by Sherry B. Bingham

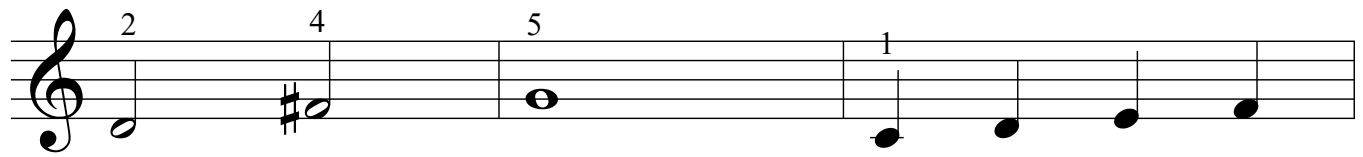
Playfully



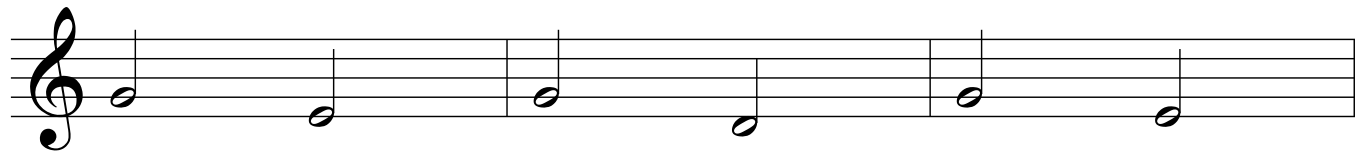
Once there was a snow - man, snow - man,



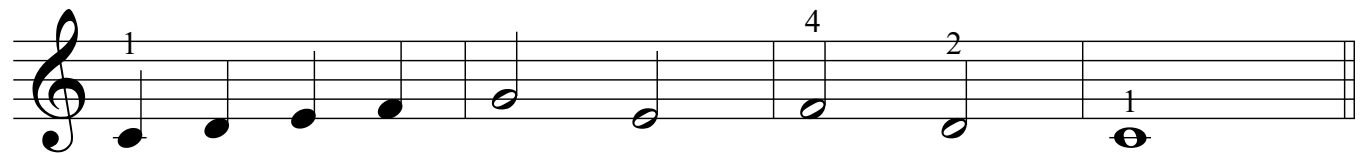
snow - man, Once there was a snow - man,



tall, tall, tall. In the sun he



melt - ed, melt - ed, melt - ed.

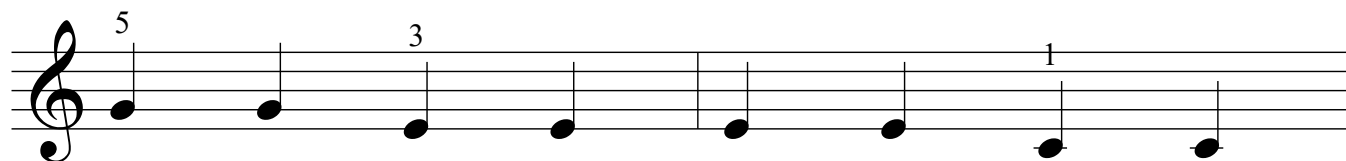


In the sun he melt - ed, small, small, small.

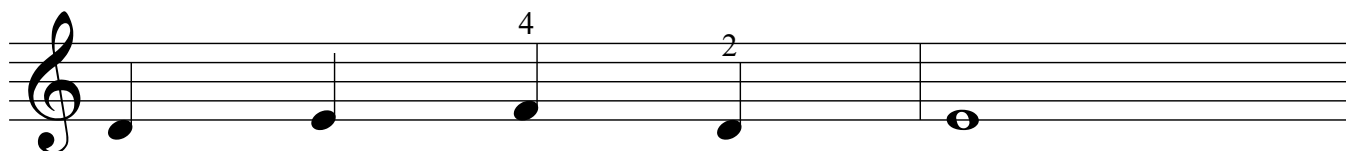
Jesus Loved the Little Children

Gently

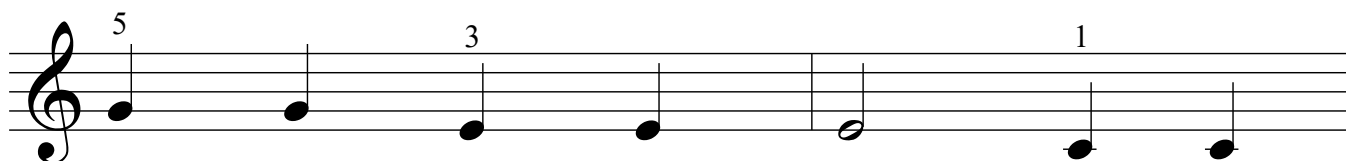
Words and music by Moïse Renstrom
arr. by Sherry B. Bingham



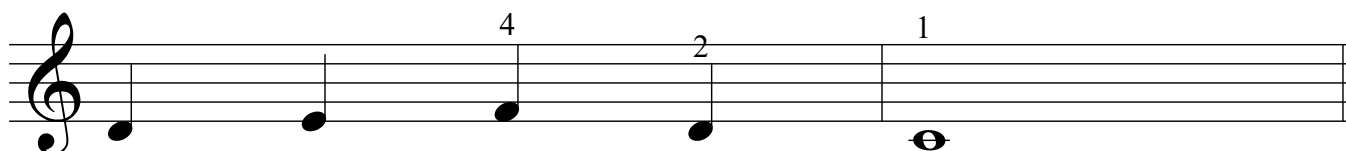
1. Je - sus loved the lit - tle chil - dren,
2. Man - y love - ly things he taught them,



Lit - tle ones all like me.
Things we all should do:



He would bless and each help them. And
Love and help each oth - er, Be



take them on his knee.
hon - est, kind, and true.

For Health and Strength

Gratefully

Words and Music: Anon.
arr. by Sherry B. Bingham

Musical notation for the first system. The treble clef staff contains a melody with four notes in the first measure (marked with a '4' above) and four notes in the second measure (marked with a '2' above). The lyrics are: For health and strength and dai - ly food we. The bass clef staff contains a single note in the first measure (marked with a '4' below) and is empty for the rest of the system.

Musical notation for the second system. The treble clef staff is empty. The bass clef staff contains a melody with four notes in the first measure (marked with a '1' below), two notes in the second measure (marked with a '2' below), and one note in the third measure (marked with a '1' below). The lyrics are: praise thy name, O Lord.

This Is God's House

Words by Louise M. Oglevee

Music by William G. Oglevee

arr. by Sherry B. Bingham

Respectfully

This system of musical notation consists of a grand staff with a treble clef on the upper staff and a bass clef on the lower staff. The lyrics are: "This is God's house, and he is here to -". The melody in the treble clef starts with a half note G4, followed by a half note A4, and then a quarter note G4. The bass clef accompaniment starts with a half note G3, followed by a half note A3, and then a half note B3. Fingerings are indicated by the number '1' above the first notes in both staves.

This system of musical notation continues the piece. The lyrics are: "day. He hears each song of praise and". The melody in the treble clef starts with a half note G4, followed by a quarter note A4, a quarter note B4, and a quarter note G4. The bass clef accompaniment is mostly empty. Fingerings are indicated by the number '4' above the first note in the treble clef, and '2', '4', '3', and '1' above the subsequent notes.

This system of musical notation concludes the piece. The lyrics are: "lis - tens while we pray.". The melody in the treble clef starts with a half note G4, followed by a half note A4, and then a half note G4. The bass clef accompaniment starts with a half note G3, followed by a half note A3, and then a half note B3. Fingerings are indicated by the number '1' above the first notes in both staves.

When Joseph Went to Bethlehem

Words by Bessie Saunders Spencer

Music by I. Reed Payne
arr. by Sherry B. Bingham

Thoughtfully

1. When Jo - seph went to Beth - le - hem, I think he took great
2.I think there at the bus - y inn that he was meek and

care mild To place his tools and close his shop and leave no shav - ings
And awed to be the guard - i - an of Mar - y's sa - cred

there. He urged the don - key for - ward then, with Mar - y on its
child. Per - haps all through the chill - y hours he smoothed the swad - dling

4

back, And car-ried bread and goat cheese in a little lin - en sack.
bands, And Je - sus felt the qui - et strength of Jo - seph's gen - tle

4

hands. 3. And close be-side the man-ger bed,-he dimmed the lan-tern's

4

4 2 1

light And held the lit - tle Je - sus close up - on that ho - ly night.

1

Head, Shoulders, Knees, and Toes

Playfully

Words and music: Anon.
arr. by Sherry B. Bingham

Musical notation for the first system. The treble clef staff contains the melody with lyrics: "Head, shoul- ders, knees, and toes, knees and toes,". Fingerings are indicated above notes: 2 for the first note, 4 for the second, and 1 for the third. The bass clef staff contains the accompaniment with lyrics: "Head, shoul- ders, knees, and toes, knees and toes,". A finger number '1' is written below the first bass note.

Musical notation for the second system. The treble clef staff contains the melody with lyrics: "knees and toes, Head, shoul- ders, knees, and toes,". A finger number '2' is written above the first note of the second phrase. The bass clef staff contains the accompaniment with lyrics: "knees and toes, Head, shoul- ders, knees, and toes,". Finger numbers '2' and '1' are written below the first and second bass notes of the second phrase, respectively.

Musical notation for the third system. The treble clef staff contains the melody with lyrics: "eyes, ears, mouth, and nose." A finger number '1' is written above the first note. The bass clef staff contains the accompaniment with lyrics: "eyes, ears, mouth, and nose." Finger numbers '4' and '1' are written below the first and second bass notes, respectively.

The World Is So Lovely

Words and music by Moisselle Renstrom

arr. by Sherry B. Bingham

Sweetly

1. The world is so love - ly! I'm glad as can
2. The sun - shine, the flow - ers, the stars up a -

2

4

1

Detailed description: This system of musical notation is for the first system of the song. It consists of a grand staff with a treble clef on the upper staff and a bass clef on the lower staff. The time signature is 3/4. The first measure contains two vocal lines: '1. The' and '2. The'. The second measure contains 'world is so', 'sun - shine, the', and 'love - ly! I'm'. The third measure contains 'glad as can', 'flow - ers, the', and 'stars up a -'. The fourth measure is empty. There are fingerings '2' above the second measure and '4' below the first measure. A '1' is written below the first measure of the second system.

be bove, For A home where I Lord has cre - at - ed for me
love. I love.

1 3

4

1

1

Detailed description: This system of musical notation is for the second system of the song. It consists of a grand staff with a treble clef on the upper staff and a bass clef on the lower staff. The time signature is 3/4. The first measure contains 'be bove, For A home where I'. The second measure contains 'Lord has cre - at - ed for me'. The third measure contains 'love. I love.'. The fourth measure contains 'love.'. There are fingerings '1' above the second measure and '3' above the third measure. Fingerings '4', '1', and '1' are written below the first, second, and fourth measures respectively.

I Will Try to Be Reverent

Words and music by Wilma Boyle Bunker
arr. by Sherry B. Bingham

Reverently

Musical notation for the first system. The piece is in 4/4 time. The treble clef staff contains the melody with lyrics: "I love my Heav'n - ly Fa - ther, And". The bass clef staff provides accompaniment. Fingerings are indicated: 4 in the bass clef for the first measure, 2 in the treble clef for the second measure, 1 in the bass clef for the third measure, and 4 in the bass clef for the fourth measure.

Musical notation for the second system. The treble clef staff contains the melody with lyrics: "I will try to be Rev - 'rent when I'm". The bass clef staff provides accompaniment. Fingerings are indicated: 3 in the treble clef for the first measure, 4 in the treble clef for the second measure, and 2 in the treble clef for the third measure. A final fingering of 1 is shown in the bass clef for the fourth measure.

Musical notation for the third system. The piece concludes with the lyrics: "in his house. Then he'll be near to me." The tempo marking *Slower* is placed above the first measure. The treble clef staff contains the melody. The bass clef staff provides accompaniment. Fingerings are indicated: 1 in the treble clef for the first measure, 3 in the bass clef for the second measure, 2 in the treble clef for the third measure, and 1 in the bass clef for the fourth measure.

Jesus Said Love Everyone

Words and music by Moïse Renstrom
arr. by Sherry B. Bingham

Lovingly

4 2 2

Je - sus said love ev - 'ry - one; Treat them kind - ly

1

Detailed description: This system contains the first three measures of the song. The first measure has a treble clef with a whole note G4 (finger 4) and a bass clef with a whole note C3 (finger 1). The second measure has a treble clef with a whole note A4 (finger 2) and a bass clef with a whole note C3. The third measure has a treble clef with a whole note B4 (finger 2) and a bass clef with a whole note C3. The lyrics are 'Je - sus said love ev - 'ry - one; Treat them kind - ly'.

1 4

too. When your heart is filled with love,

Detailed description: This system contains the next three measures. The first measure has a treble clef with a whole note G4 (finger 1) and a bass clef with a whole note C3. The second measure has a treble clef with a whole note A4 (finger 4) and a bass clef with a whole note C3. The third measure has a treble clef with a whole note B4 (finger 4) and a bass clef with a whole note C3. The lyrics are 'too. When your heart is filled with love,'.

2 1

Oth - ers will love you.

1 2 1

Detailed description: This system contains the final three measures. The first measure has a treble clef with a whole note G4 (finger 2) and a bass clef with a whole note C3 (finger 1). The second measure has a treble clef with a whole note A4 (finger 1) and a bass clef with a whole note C3 (finger 2). The third measure has a treble clef with a whole note B4 (finger 1) and a bass clef with a whole note C3 (finger 1). The lyrics are 'Oth - ers will love you.'.

A Song of Thanks

Words: Anon.

Music by J. Battishill
arr. by Sherry B. Bingham

Slowly

4 2 1 3 5

Thank thee for the world so sweet; Thank thee for the

1

Detailed description: This system contains the first three measures of the song. The treble clef staff has notes with fingerings 4, 2, 1, 3, and 5. The lyrics are 'Thank thee for the world so sweet;' and 'Thank thee for the'. The bass clef staff has a single note with fingering 1.

3 4 1

food we eat; Thank thee for the birds that sing;

1

Detailed description: This system contains the next three measures. The treble clef staff has notes with fingerings 3, 4, and 1. The lyrics are 'food we eat;', 'Thank thee for the', and 'birds that sing;'. The bass clef staff has a single note with fingering 1.

5 2 1

Thank thee, God, for ev - 'ry thing!

2 1

Detailed description: This system contains the final two measures. The treble clef staff has notes with fingerings 5, 2, and 1. The lyrics are 'Thank thee, God, for' and 'ev - 'ry thing!'. The bass clef staff has notes with fingerings 2 and 1.

A Prayer

Words and music by Moiséle Renstrom
arr. by Sherry B. Bingham

Prayerfully

Musical notation for the first system of the song. It consists of a grand staff with a treble clef and a bass clef, both with a key signature of one sharp (F#) and a time signature of 3/4. The melody is in the treble clef, and the bass line is in the bass clef. The lyrics are: "Fa - ther in Heav - en, on this love - ly day Please help me be". Fingerings are indicated by numbers 1, 2, and 1 above the notes.

Musical notation for the second system of the song. It consists of a grand staff with a treble clef and a bass clef, both with a key signature of one sharp (F#) and a time signature of 3/4. The melody is in the treble clef, and the bass line is in the bass clef. The lyrics are: "hap - py and kind as I play. Help me to al - ways be". Fingerings are indicated by numbers 4, 1, and 4 above the notes.

Musical notation for the third system of the song. It consists of a grand staff with a treble clef and a bass clef, both with a key signature of one sharp (F#) and a time signature of 3/4. The melody is in the treble clef, and the bass line is in the bass clef. The lyrics are: "hon - est and fair. Help me with oth - ers my bless - ings to share.". Fingerings are indicated by numbers 1, 2, 2, 4, 5, and 4 above the notes.